



## BMR-BK01 SERIES HYDRAULIC MOTOR WITH BRAKE

BMR-BK01 Series hydraulic motor with brake extending BMR series motor range. This motor has an integrated holding brake.

### Characteristic features:

- \*Advanced manufacturing devices for the Geroler gear set , which use low pressure of start-up , provide smooth , reliable operation and high efficiency .
- \*Shaft seal can bear high pressure of back and the motor can be use in parallel or in series .
- \*Special design in the driver-linker and prolong operating life .
- \*Special design for distribution system can meet the requirement of low noise of unit .
- \*Compact volume and easy installation .
- \*Small volume and radial dimension,high holding torque,power brake,low weight and easy to install.

### Main Specification

Type		BMR -BK01 50	BMR -BK01 80	BMR -BK01 100	BMR -BK01 125	BMR -BK01 160	BMR -BK01 200	BMR -BK01 250	BMR -BK01 315	BMR -BK01 375
Geometric displacement (cm <sup>3</sup> /rev.)		51.7	81.5	102	127.2	157.2	194.5	253.3	317.5	381.4
Max. speed (rpm)	rated	490	479	478	421	341	276	212	169	141
	cont.	509	502	497	459	372	301	231	184	166
	int.	603	598	574	574	465	376	289	230	192
Max. torque (N·m)	rated	104	164	205	256	316	335	437	456	465
	cont.	103	203	254	317	391	359	437	456	465
	int.	88.6	160	200	250	308	333	473	502	520
Max. output (KW)	rated	5.3	8.2	10.3	11.3	11.3	9.7	9.7	8.1	6.9
	cont.	5.5	10.7	13.2	15.2	15.2	11.3	10.6	8.8	8.1
	int.	5.6	10	12	15	15	13.1	14.3	12.1	10.5
Max. Pressure drop (MPa)	rated	14	14	14	14	14	12	12	10	8.5
	cont.	14	17.5	17.5	17.5	17.5	13	12	10	8.5
	int.	17.5	20	20	20	20	17.5	13	11	9.5
Max. Flow (L/min)	rated	26	40	50	55	55	55	55	55	55
	cont.	27	42	52	60	60	60	60	60	65
	int.	32	50	60	75	75	75	75	75	75
Min. opening pressure (MPa)		1.7—2.2								
Max. inlet pressure (MPa)		25								
Max. brake release port pressure (MPa)		25								
Max. static torque (Nm)		500—550								
Weight (kg)		11.7	11.9	11.9	12.2	12.5	13	13.5	14	14.5

\*Rated speed and rated torque:output value of speed and torque under rated flow and rated pressure.

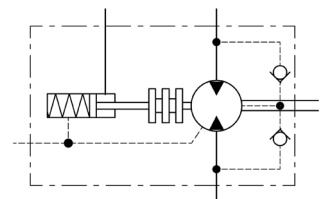
\*Continuous pressure:Max. value of operating motor continuously.

\*Intermittent pressure:Max. value of operating motor in 6 seconds per minute .

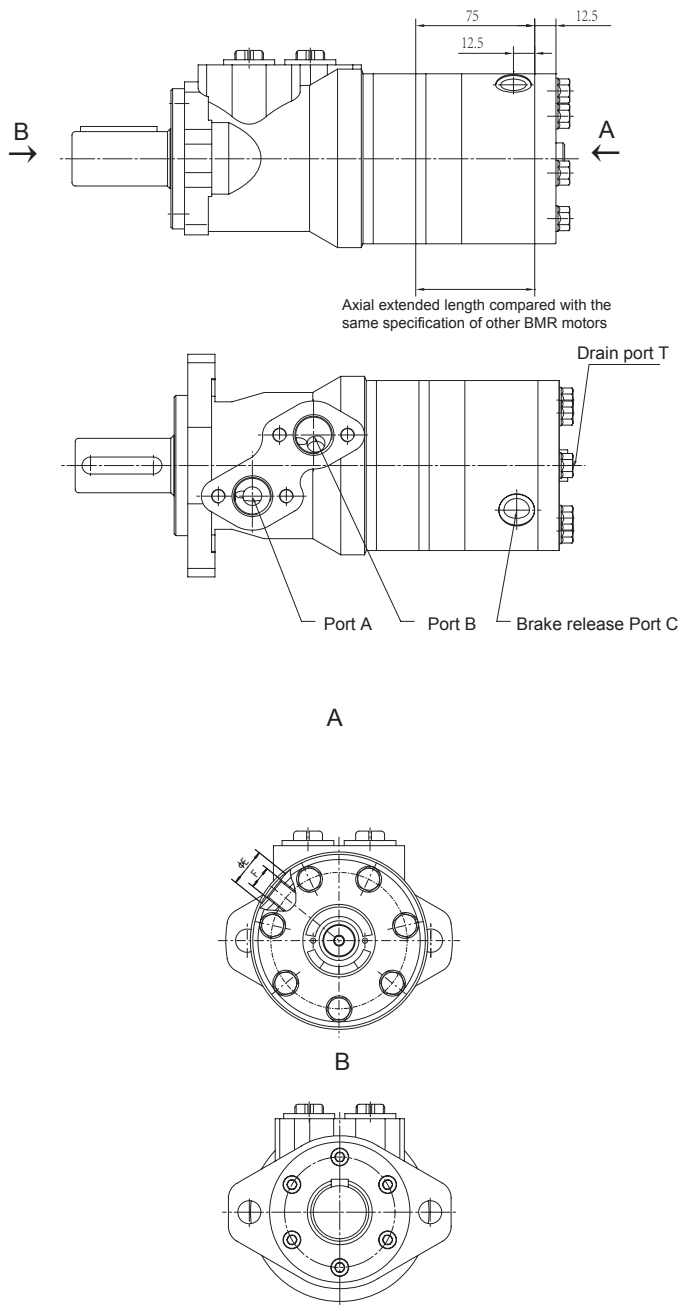
\*Peak pressure:Max. value of operating motor in 0.6 second per minute.

\*Such kind of brake is only used in static paring brake.Dynamic braking in not recommended.

When the motor integrated with brake is working, the pressure at releasing port must be more than 2.2MPa. In the status of braking, the pressure at releasing port must be less than 1.7 MPa, optimally 0 MPa. It is attention in use that the back pressure of the oil circuit is the best 0 MPa.



**BMR-BK01 DIMENSIONS AND MOUNTING DATA**



Model	Port C	ΦE	F
	G	22	G1/4 Depth 9

Note: The mount data is completely referred to BMR series motor. The axial extended length reduces 75mm as picture. Port C is brake releasing port, the position is as picture.

**Order information**

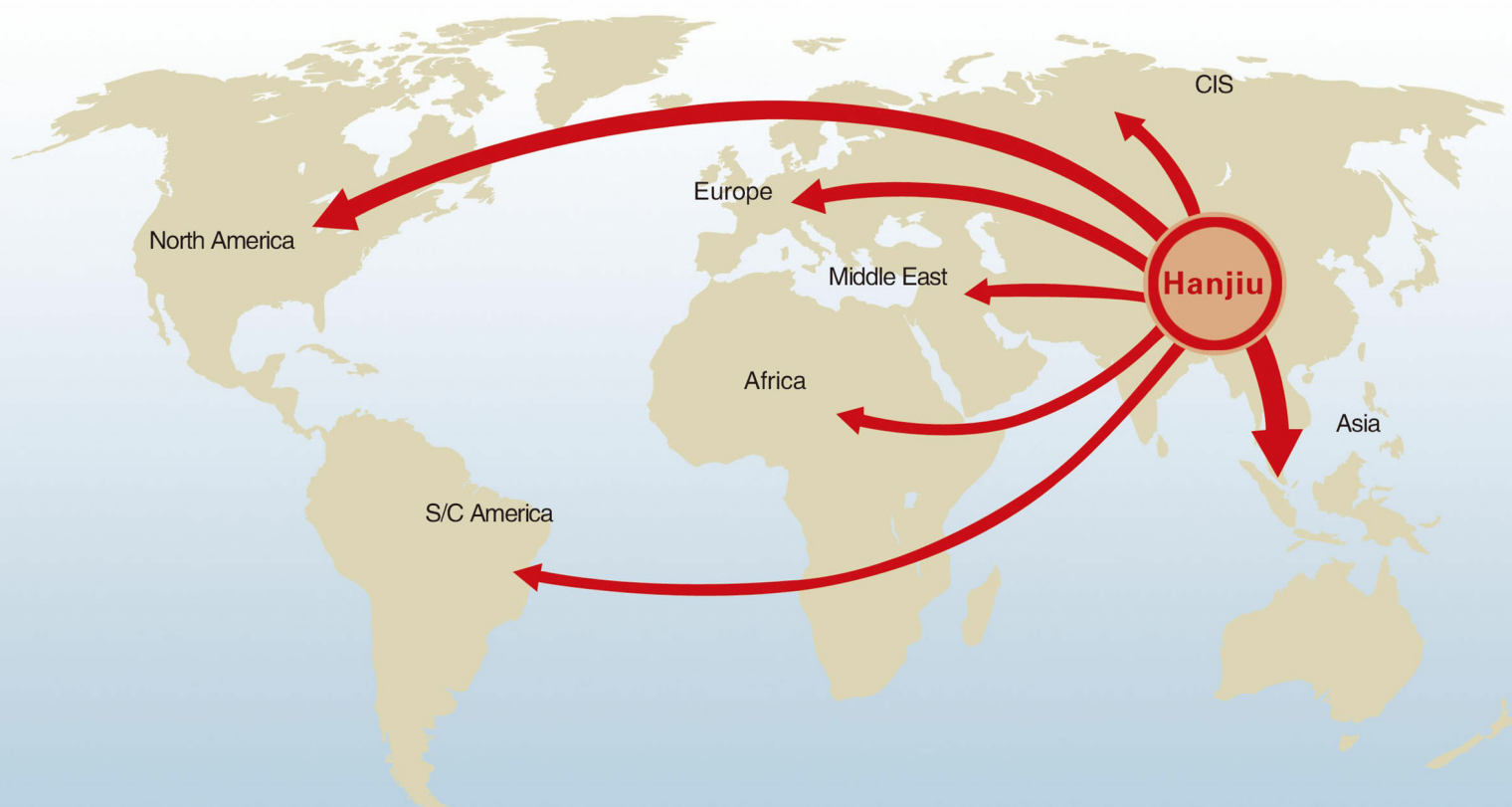
Pos.1	2	3	4	5	6	7	8	9
			BMR-BK01					
Code	Disp.	Flange	Output Shaft	Ports and Drain Port	Brake release Port	Rotation Direction	Paint	Unusually Function
	50	2-Ø13.5Rhomb-flange, pilot	A Shaft Ø25,parallel Key 8x7x32	D G1/2 Manifold Mount 4xM8, G1/4 M22x1.5 Manifold Mount 4xM8, M14x1.5	G1/4	Omit Standard	00 No paint	N1 Big radial force
	80	Ø82.5x8	C Shaft Ø25.4,parallel Key 6.35x6.35x31.75					
	100	4-Ø13.5Rhomb-flange, pilot	E Shaft Ø25.4,spined tooth SAE 6B	S 7/8-14 O-ring manifold	Depth 9	Omit	Blue	
	125	Ø82.5x8	R Short shaft Ø25.4,parallel Key 6.35x6.35x31.75	P 4x5/16-18UNC, 7/16-20UNF	facing Ø22	R Opposite	Black	
	160	4-3/8-16Square-flange, pilot	B Shaft Ø32,parallel Key 10x8x45	12-14 NPTF			Silver grey	
	200	Ø44.4x2.8	F Shaft Ø31.75,spined tooth 14-DP12/24	Manifold 4x5/16-18UNC, 7/16- 20UNF				
	250	4-M10Square-flange, pilot	FD Long shaft Ø31.75,spined tooth 14-DP12/24	PT(Rc)1/2 Manifold 4xM8, PT(Rc)1/4				
	315	Ø44.4x2.8	G Shaft Ø31.75,parallel Key 7.96x7.96x31.75					
	375		T Cone-Shaft Ø28.56,parallel Key B5x5x14					

Note:When the table is used , please fill the code of right rows in the table and give us , which the code information is consists of construction , displacement , mounting flange ,output shaft and ports . If the specification is not in the table or you have specific requirements , please contact us .

Note:The shafts of B1/F/D/G/T/T3 are only suitable for flanges of 2 and 4.

# 专业做液压-专注做精品

PROFESSIONAL ON HYDRAULIC-FOCUS ON HIGH QUALITY



## 石家庄寒九科技有限公司

地址：中国河北石家庄友谊北大街398号

电话：+86 (311) 68123061

传真：+86 (10) - 80115555-568844

邮编：050000

网址：[www.hjhydraulic.com](http://www.hjhydraulic.com)

邮箱：[manager@sjzhjism.com](mailto:manager@sjzhjism.com)

## SHIJIAZHUANG HANJIU TECHNOLOGY CO.,LTD.

Add: No. 398 Youyi Street, Shijiazhuang, Hebei, China

Tel: +86 (311) 68123061

Fax: +86 (10) - 80115555-568844

Post code: 050000

Web: [www.hjhydraulic.com](http://www.hjhydraulic.com)

Email: [manager@sjzhjism.com](mailto:manager@sjzhjism.com)